



Hudetech

VIBRATION ISOLATION PRODUCT



PRODUCT

I. RUBBER HANGER



II. RUBBER MOUNT



III. RUBBER PAD



IV. SPRING HANGER



PRODUCT

IV. SPRING HANGER

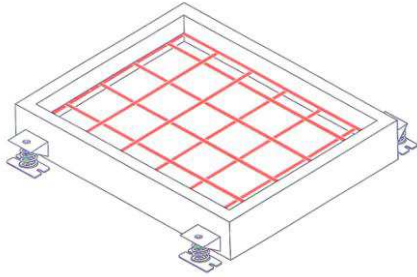


V. SPRING MOUNT

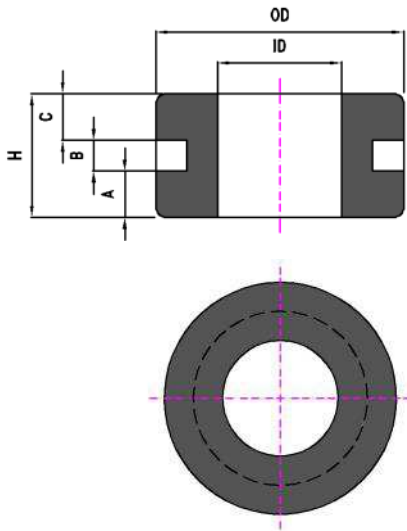


PRODUCT

VI. INERTIA BASE, PIPE MOUNT



VIBRATION ISOLATION WASHER - RW



Design feature:

- Use neoprene element.
- Saving space installation.

Application:

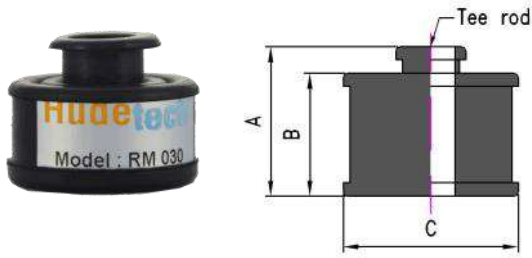
- Ceiling, Fan, Duct, etc.,...

Model	Color Code	Capacity	Deflection	Dimension mm					
		kgs	mm	A	B	C	OD	ID	H
RW 025	Black	05-25	1-3	3	2	3	16	8	8

Noted:

- Dimension is mentioned with 5% tolerance.
- To achieve good isolation do not overload.

RUBBER MOUNT - RM 030



Design feature:

- Use neoprene element.
- Saving space installation.

Application:

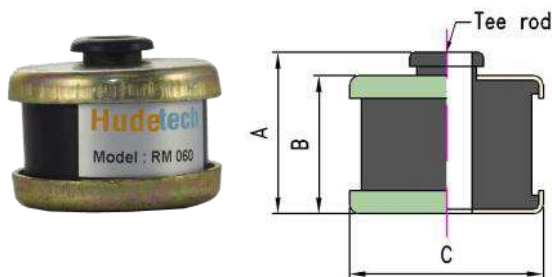
- Duct, Piping, Suspended Ceiling, Fan, FCU, etc.,...

Model	Capacity	Deflection	Rod size	Dimension mm		
	kgf	mm	mm	A	B	C
RM 030	0-30	4	10	25	18	32

Noted:

- Dimension is mentioned with ± 5 tolerance.
- To achieve good isolation do not overload.

RUBBER MOUNT-RM 060



Design feature:

- Use neoprene element.
- Saving space installation.

Application:

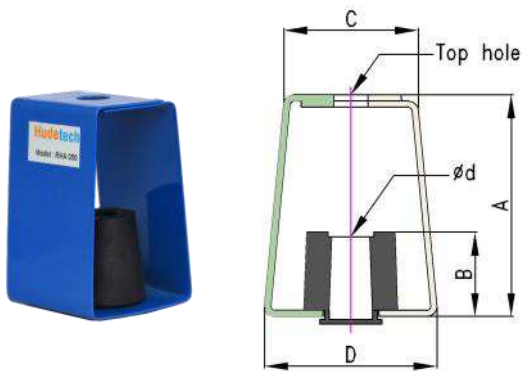
- Duct, Piping, Suspended Ceiling, Fan, FCU, etc.,...

Model	Capacity	Deflection	Rod size	Dimension mm		
	kgf	mm	mm	A	B	C
RM 060	31-60	4	10	34	28	43

Noted:

- Dimension is mentioned with ± 5 tolerance.
- To achieve good isolation do not overload.

RUBBER HANGER - RHA



Design feature:

- Use neoprene element with steel frame.
- Saving space installation.

Application:

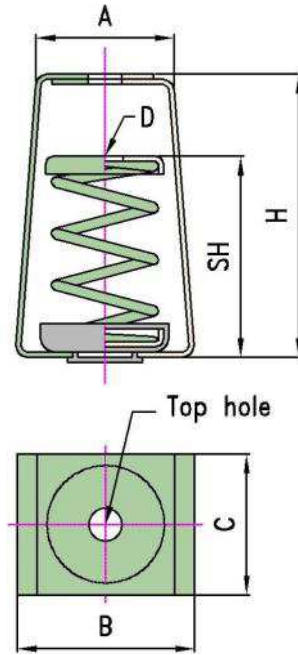
- Duct, Piping, Suspended Ceiling, Fan, FCU, etc.,...

Model	Color code	Capacity kgf	Max. deflection mm	Top hole mm	Dimension mm				
					A	B	C	D	Ød
RHA 025	Black	0-25	3	12	80	33	40	50	12
RHA 050	Red	0-50	5						
RHA 070	Black	50-70	6						
RHA 100	Black	50-100	5	14	100	40	35	55	14
RHA 120	Red	50-120	6						
RHA 150	Black	100-150	5	22	142	54	86	110	24
RHA 200	Black	150-200	7						
RHA 300	Grey	200-300	10						
RHA 400	Orange	300-400	12						
RHA 500	Black	400-500	10	24	155	55	118	143	24
RHA 600	Grey	500-600	10						
RHA 800	Orange	600-800	12						
RHA 1000	White	800-1,000	12						
RHA 1250	Red	1,000-1,250	14						
RHA 1500	Blue	1,250-1,500	16						

Noted:

- Dimension is mentioned with ±5 tolerance.
- To achieve good isolation do not overload.

SPRING HANGER - SH



Design feature:

- High efficiency vibration from structure born vibration and noise.

Application:

- Fan, AHU, FCU, Piping, Ducting, etc.,...

Feature:

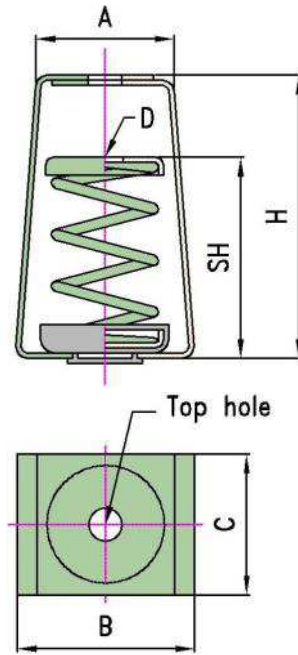
- Compliance-Springs designed according to BS 1726 (Part 1): 2002

Model	Color	Capacity	Deflection	Top Hole	Dimension mm				
		kgf	mm	mm	A	B	C	D	H
SH 10	Purple	10	25	13	55	70	55	12	115
SH 15	Yellow	15	25	13	55	70	55	12	115
SH 20	Grey	20	25	13	55	70	55	12	115
SH 40	Light Blue	40	25	13	55	70	55	12	115
SH 60	Blue	60	25	13	55	70	55	12	115
SH 30s	Yellow	30	25	15	83	85	65	14	125
SH 60S	Blue	60	25	15	83	85	65	14	125
SH 100	Green	100	25	15	83	85	65	14	125
SH 160	Orange	160	25	15	83	85	65	14	125
SH 200	Red	200	25	15	83	85	65	14	125
SH 250	Purple	250	25	15	83	85	65	14	125

Noted:

- Dimension is mentioned with ± 5 tolerance.
- To achieve good isolation do not overload.

SPRING HANGER - SH



Design feature:

- High efficiency vibration from structure born vibration and noise.

Application:

- Fan, AHU, FCU, Piping, Ducting, etc.,...

Feature:

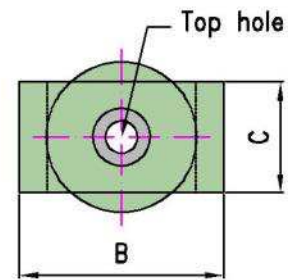
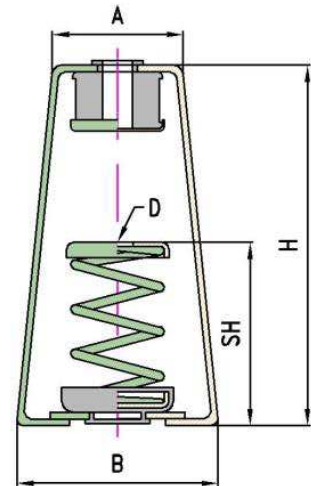
- Compliance-Springs designed according to BS 1726 (Part 1): 2002

Model	Color	Capacity	Deflection	Top Hole	Dimension mm				
		kgf	mm	mm	A	B	C	D	H
SH 160S	Orange	160	25	19	102	105	95	18	165
SH 200S	Red	200	25	19	102	105	95	18	165
SH 250S	Purple	250	25	19	102	105	95	18	165
SH 300	Grey	300	25	19	102	105	95	18	165
SH 400	Red	400	25	19	102	105	95	18	165
SH 500	Brown	500	25	19	102	105	95	18	165
SH 600	Black	600	25	19	102	105	95	18	165
SH 800	Red	800	25	19	102	105	95	18	165
SH 1050	White	1,050	25	19	102	105	95	18	165
SH 1250	Green	1,250	25	19	102	105	95	18	165
SH 1500	Orange	1,500	25	19	102	105	95	18	165

Noted:

- Dimension is mentioned with ± 5 tolerance.
- To achieve good isolation do not overload.

SPRING HANGER - SHA



Design feature:

- High efficiency vibration from structure born vibration and noise.

Application:

- Fan, AHU, FCU, Piping, Ducting, etc.,...

Feature:

- Compliance-Springs designed according to BS 1726 (Part 1): 2002

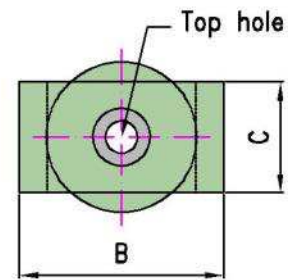
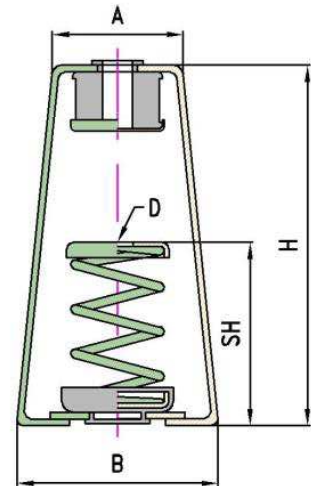
Model	Color	Capacity	Deflection	Top Hole	Dimension mm				
		kgf	mm	mm	A	B	C	D	H
SHA 10	Purple	10	25	13	60	90	44	12	160
SHA 15	Yellow	15	25	13	60	90	44	12	160
SHA 20	Grey	20	25	13	60	90	44	12	160
SHA 40	Light Blue	40	25	13	60	90	44	12	160
SHA 60	Blue	60	25	13	60	90	44	12	160
SHA 30S	Yellow	30	25	15	80	112	60	14	210
SHA 60S	Blue	60	25	15	80	112	60	14	210
SHA 100	Green	100	25	15	80	112	60	14	210
SHA 160	Orange	160	25	15	80	112	60	14	210
SHA 200	Red	200	25	15	80	112	60	14	210
SHA 250	Purple	250	25	15	80	112	60	14	210

Noted:

- Dimension is mentioned with ± 5 tolerance.
- To achieve good isolation do not overload.

SHA

SPRING HANGER - SHA



Design feature:

- High efficiency vibration from structure born vibration and noise.

Application:

- Fan, AHU, FCU, Piping, Ducting, etc.,...

Feature:

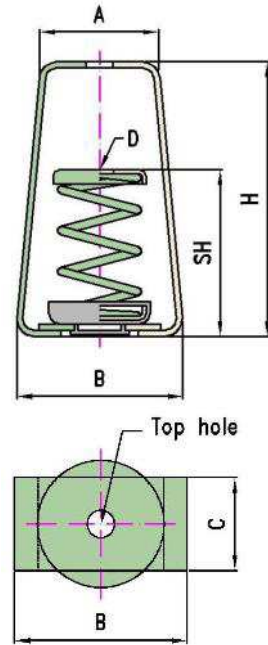
- Compliance-Springs designed according to BS 1726 (Part 1): 2002

Model	Color	Capacity	Deflection	Top Hole	Dimension mm				
		kgf	mm	mm	A	B	C	D	H
SHA 160S	Orange	160	25	19	86	122	70	18	245
SHA 200S	Red	200	25	19	86	122	70	18	245
SHA 250S	Purple	250	25	19	86	122	70	18	245
SHA 300	Grey	300	25	19	86	122	70	18	245
SHA 400	Red	400	25	19	86	122	70	18	245
SHA 500	Brown	500	25	19	86	122	70	18	245
SHA 600	Black	600	25	19	86	122	70	18	245
SHA 800	Red	800	25	19	86	122	70	18	245
SHA 1050	White	1,050	25	19	86	122	70	18	245
SHA 1250	Green	1,250	25	19	86	122	70	18	245
SHA 1500	Orange	1,500	25	19	86	122	70	18	245

Noted:

- Dimension is mentioned with ± 5 tolerance.
- To achieve good isolation do not overload.

SPRING HANGER - SHB



Design feature:

- High efficiency vibration from structure born vibration and noise.

Application:

- Fan, AHU, FCU, Piping, Ducting, etc.,...

Feature:

- Compliance-Springs designed according to BS 1726 (Part 1): 2002

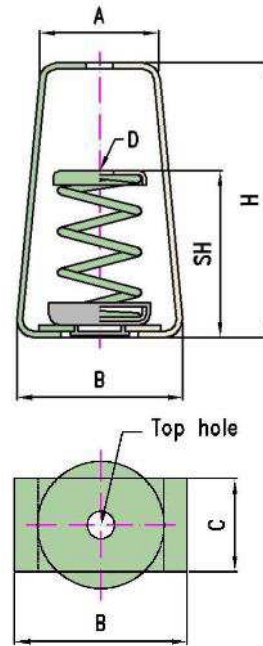
Model	Color	Capacity	Deflection	Top Hole	Dimension mm				
		kgf	mm	mm	A	B	C	D	H
SHB 10	Purple	10	25	13	60	85	44	12	135
SHB 15	Yellow	15	25	13	60	85	44	12	135
SHB 20	Grey	20	25	13	60	85	44	12	135
SHB 40	Light Blue	40	25	13	60	85	44	12	135
SHB 60	Blue	60	25	13	60	85	44	12	135
SHB 30S	Yellow	30	25	15	80	110	60	14	175
SHB 60S	Blue	60	25	15	80	110	60	14	175
SHB 100	Green	100	25	15	80	110	60	14	175
SHB 160	Orange	160	25	15	80	110	60	14	175
SHB 200	Red	200	25	15	80	110	60	14	175
SHB 250	Purple	250	25	15	80	110	60	14	175

Noted:

- Dimension is mentioned with ± 5 tolerance.
- To achieve good isolation do not overload.

SHB

SPRING HANGER - SHB



Design feature:

- High efficiency vibration from structure born vibration and noise.

Application:

- Fan, AHU, FCU, Piping, Ducting, etc.,...

Feature:

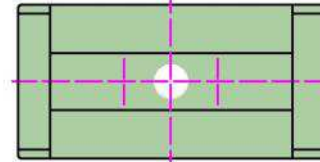
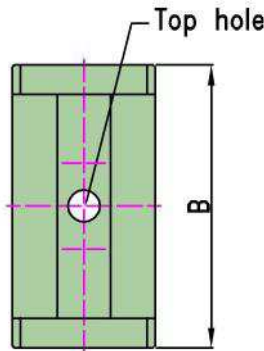
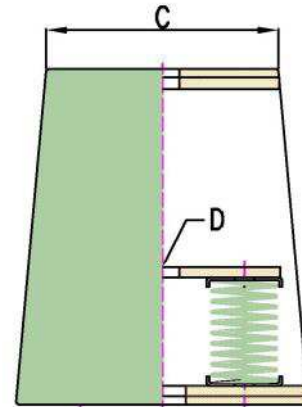
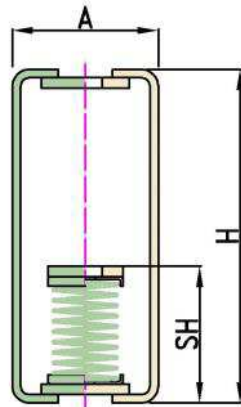
- Compliance-Springs designed according to BS 1726 (Part 1): 2002

Model	Color	Capacity	Deflection	Top Hole	Dimension mm				
		kgf	mm	mm	A	B	C	D	H
SHB 160S	Orange	160	25	19	88	120	70	18	210
SHB 200S	Red	200	25	19	88	120	70	18	210
SHB 250S	Purple	250	25	19	88	120	70	18	210
SHB 300	Grey	300	25	19	88	120	70	18	210
SHB 400	Red	400	25	19	88	120	70	18	210
SHB 500	Brown	500	25	19	88	120	70	18	210
SHB 600	Black	600	25	19	88	120	70	18	210
SHB 800	Red	800	25	19	88	120	70	18	210
SHB 1050	White	1,050	25	19	88	120	70	18	210
SHB 1250	Green	1,250	25	19	88	120	70	18	210
SHB 1500	Orange	1,500	25	19	88	120	70	18	210

Noted:

- Dimension is mentioned with ± 5 tolerance.
- To achieve good isolation do not overload.

SPRING HANGER - SHB II



Design feature:

- High efficiency vibration from structure born vibration and noise.

Application:

- Fan, AHU, FCU, Piping, Ducting, etc.,...

Feature:

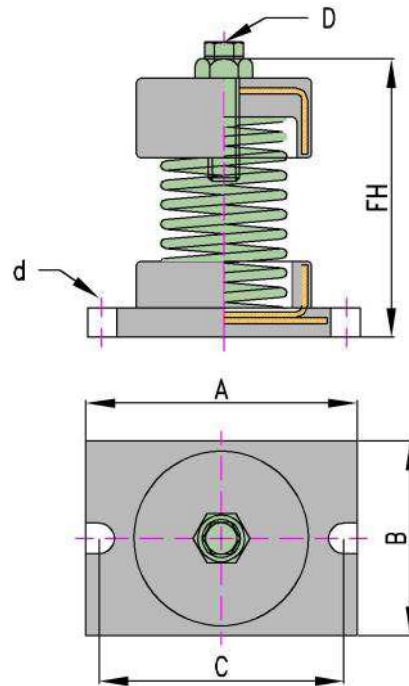
- Compliance-Springs designed according to BS 1726 (Part 1): 2002

Model	Color	Capacity	Deflection	Top Hole	Dimension mm						
		kgf	mm	mm	A	B	C	D	E	d	H
SHB II 320S	Orange	320	25	32	140	280	222	M16	280	M30	320
SHB II 400S	Red	400	25	32	140	280	222	M16	280	M30	320
SHB II 500S	Purple	500	25	32	140	280	222	M16	280	M30	320
SHB II 600	Grey	600	25	32	140	280	222	M16	280	M30	320
SHB II 800	Red	800	25	32	140	280	222	M16	280	M30	320
SHB II 1000	Brown	1,000	25	32	140	280	222	M16	280	M30	320
SHB II 1200	Black	1,200	25	32	140	280	222	M16	280	M30	320
SHB II 1600	Red	1,600	25	32	140	280	222	M16	280	M30	320
SHB II 2100	White	2,100	25	32	140	280	222	M16	280	M30	320
SHB II 2500	Green	2,500	25	32	140	280	222	M16	280	M30	320
SHB II 3000	Orange	3,000	25	32	140	280	222	M16	280	M30	320

Noted:

- Dimension is mentioned with ± 5 tolerance.
 - To achieve good isolation do not overload.

OPEN SPRING MOUNT - SMA



Design feature:

- Laterally stable springs
- Non-Skid bolt down base.
- Plated leveling/lock bolt.

Application:

- AHU, Pump, Centrifugal and Axial Fan, Inertia Base, Internal Combustion Engines, etc.,...

Feature:

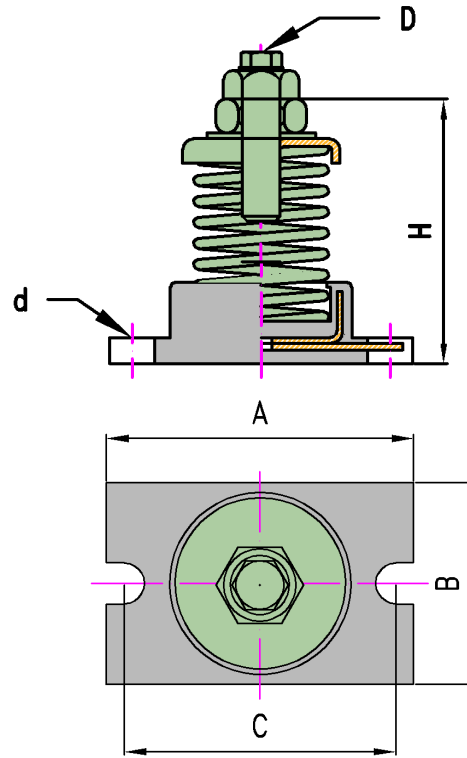
- Compliance-Springs designed according to BS 1726 (Part 1): 2002

Model	Color	Capacity	Deflection	Dimension mm					
		kgf	mm	A	B	C	D	d	FH
SMA 015	Purple	15	25	110	75	90	M8	M8	115
SMA 030	Yellow	30	25	110	75	90	M8	M8	115
SMA 060	Blue	60	25	110	75	90	M8	M8	115
SMA 100	Green	100	25	110	75	90	M8	M8	115
SMA 160	Orange	160	25	110	75	90	M8	M8	115
SMA 200	Red	200	25	110	75	90	M8	M8	115
SMA 250	Purple	250	25	110	75	90	M8	M8	115
SMA 160S	Orange	160	25	140	100	115	M10	M10	140
SMA 200S	Red	200	25	140	100	115	M10	M10	140
SMA 250S	Purple	250	25	140	100	115	M10	M10	140
SMA 300	Grey	300	25	140	100	115	M10	M10	140
SMA 400	Red	400	25	140	100	115	M10	M10	140
SMA 500	Brown	500	25	140	100	115	M10	M10	140
SMA 600	Black	600	25	140	100	115	M10	M10	140
SMA 800	Red	800	25	140	100	115	M10	M10	140
SMA 1050	White	1,050	25	140	100	115	M10	M10	140
SMA 1250	Green	1,250	25	140	100	115	M10	M10	140
SMA 1500	Orange	1,500	25	140	100	115	M10	M10	140

Noted:

- Dimension is mentioned with ± 5 tolerance.
- To achieve good isolation do not overload.

OPEN SPRING MOUNT - SMB



Design feature:

- Laterally stable springs
- Non-Skid bolt down base.
- Plated leveling/lock bolt.

Application:

- AHU, Pump, Centrifugal and Axial Fan, Inertia Base, Internal Combustion Engines, etc.,...

Feature:

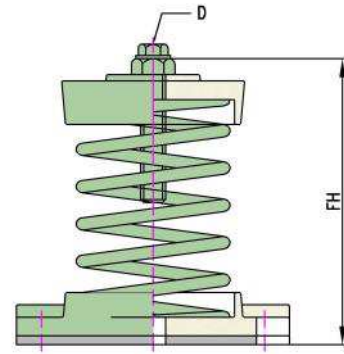
- Compliance-Springs designed according to BS 1726 (Part 1): 2002

Model	Color	Capacity	Deflection	Dimension mm					
		kgf	mm	A	B	C	D	d	FH
SMB 015	Purple	15	25	110	75	90	M8	M8	105
SMB 030	Yellow	30	25	110	75	90	M8	M8	105
SMB 060	Blue	60	25	110	75	90	M8	M8	105
SMB 100	Green	100	25	110	75	90	M8	M8	105
SMB 160	Orange	160	25	110	75	90	M8	M8	105
SMB 200	Red	200	25	110	75	90	M8	M8	105
SMB 250	Purple	250	25	110	75	90	M8	M8	105
SMB 160S	Orange	160	25	140	100	115	M10	M10	135
SMB 200S	Red	200	25	140	100	115	M10	M10	135
SMB 250S	Purple	250	25	140	100	115	M10	M10	135
SMB 300	Grey	300	25	140	100	115	M10	M10	135
SMB 400	Red	400	25	140	100	115	M10	M10	135
SMB 500	Brown	500	25	140	100	115	M10	M10	135
SMB 600	Black	600	25	140	100	115	M10	M10	135
SMB 800	Red	800	25	140	100	115	M10	M10	135
SMB 1050	White	1,050	25	140	100	115	M10	M10	135
SMB 1250	Green	1,250	25	140	100	115	M10	M10	135
SMB 1500	Orange	1,500	25	140	100	115	M10	M10	135

Noted:

- Dimension is mentioned with ± 5 tolerance.
- To achieve good isolation do not overload.

OPEN SPRING MOUNT - SMA-2 (50mm Deflection)



Design feature:

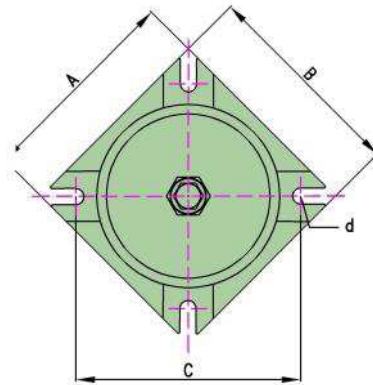
- Laterally stable springs
- Non-Skid bolt down base.
- Plated leveling/lock bolt.

Application:

- AHU, Pump, Centrifugal and Axial Fan, Inertia Base, Internal Combustion Engines, etc.,...

Feature:

- Compliance-Springs designed according to BS 1726 (Part 1): 2002



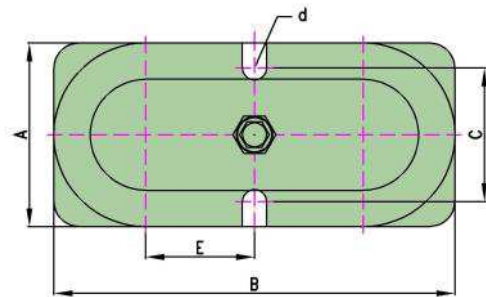
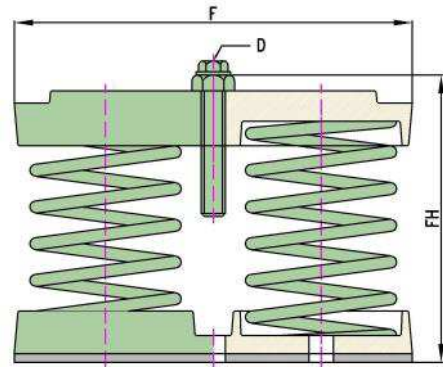
Model	Color	Capacity	Deflection	Dimension mm											
		kgf	mm	A	B	C	D	d	FH						
SMA-2-100	Green	100	50	135	135	140	M12	M10	195						
SMA-2-150	Orange	150	50												
SMA-2-200	Red	200	50												
SMA-2-250	Purple	250	50												
SMA-2-300	Grey	300	50												
SMA-2-400	Red	400	50												
SMA-2-500	Brown	500	50												
SMA-2-500	Brown	500	50	165	165	180	M12	M10	230						
SMA-2-600	Black	600	50												
SMA-2-800	Red	800	50												
SMA-2-1000	White	1,000	50	186	186	210	M12	M10	280						
SMA-2-1300	Green	1,300	50												
SMA-2-1800	Orange	1,800	50												
SMA-2-1300	Green	1,300	50							245	245	275	M12	M10	315
SMA-2-1800	Orange	1,800	50												
SMA-2-2400	Black	2,400	50												
SMA-2-3200	Red	3,200	50												
SMA-2-4000	White	4,000	50												

Noted:

- Dimension is mentioned with ± 5 tolerance.
- To achieve good isolation do not overload.

Quality MEP Product

OPEN SPRING MOUNT - SMA-2-II (50mm Deflection)



Design feature:

- Laterally stable springs
- Non-Skid bolt down base.
- Plated leveling/lock bolt.

Application:

- AHU, Pump, Centrifugal and Axial Fan, Inertia Base, Internal Combustion Engines, etc.,...

Feature:

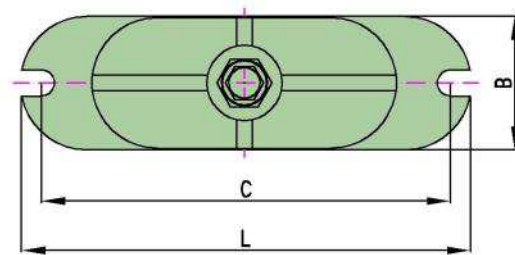
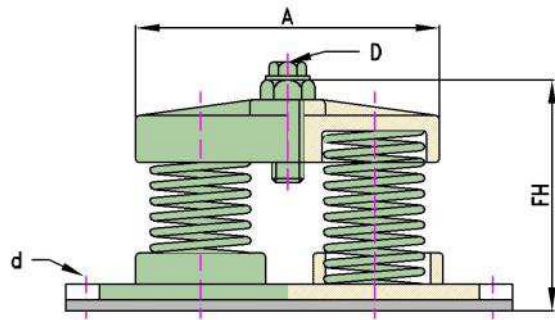
- Compliance-Springs designed according to BS 1726 (Part 1): 2002

Model	Color	Capacity kgf	Deflection mm	Dimension mm							
				A	B	C	D	d	E	F	FH
SMA-2-II-200	Green	200	50	115	255	74	M12	M16	70	255	198
SMA-2-II-300	Orange	300	50								
SMA-2-II-400	Red	400	50								
SMA-2-II-500	Purple	500	50								
SMA-2-II-600	Grey	600	50								
SMA-2-II-800	Red	800	50								
SMA-2-II-1000	Brown	1,000	50	150	325	108	M12	M16	88	325	235
SMA-2-II-1200	Black	1,200	50								
SMA-2-II-1600	Red	1,600	50								
SMA-2-II-2000	White	2,000	50								

Noted:

- Dimension is mentioned with ± 5 tolerance.
- To achieve good isolation do not overload.

OPEN SPRING MOUNT - SMC II



Design feature:

- Laterally stable springs
- Non-Skid bolt down base.
- Plated leveling/lock bolt.

Application:

- AHU, Pump, Centrifugal and Axial Fan, Inertia Base, Internal Combustion Engines, etc.,...

Feature:

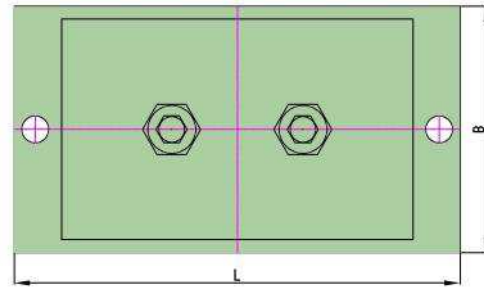
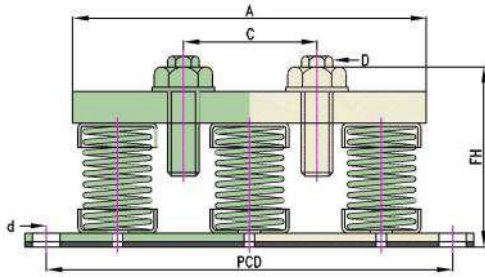
- Compliance-Springs designed according to BS 1726 (Part 1): 2002

Model	Color	Capacity kgf	Deflection mm	Dimension mm						
				A	B	C	L	D	d	FH
SMC II 320S	Orange	320	25	210	85	265	285	M12	M16	135
SMC II 400S	Red	400	25	210	85	265	285	M12	M16	135
SMC II 500S	Purple	500	25	210	85	265	285	M12	M16	135
SMC II 600	Grey	600	25	210	85	265	285	M12	M16	135
SMC II 800	Red	800	25	210	85	265	285	M12	M16	135
SMC II 1000	Brown	1,000	25	210	85	265	285	M12	M16	135
SMC II 1200	Black	1,200	25	210	85	265	285	M12	M16	135
SMC II 1600	Red	1,600	25	210	85	265	285	M12	M16	135
SMC II 2100	White	2,100	25	210	85	265	285	M12	M16	135
SMC II 2500	Green	2,500	25	210	85	265	285	M12	M16	135
SMC II 3000	Orange	3,000	25	210	85	265	285	M12	M16	135

Noted:

- Dimension is mentioned with ± 5 tolerance.
- To achieve good isolation do not overload.

OPEN SPRING MOUNT- SMD VI



Design feature:

- Laterally stable springs
- Non-Skid bolt down base.
- Plated leveling/lock bolt.

Application:

- AHU, Pump, Centrifugal and Axial Fan, Inertia Base, Internal Combustion Engines, etc.,...

Feature:

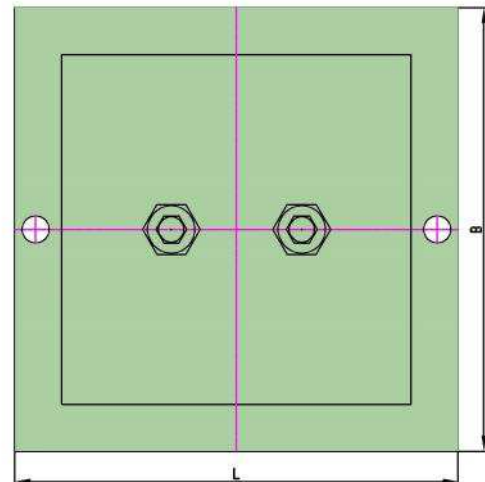
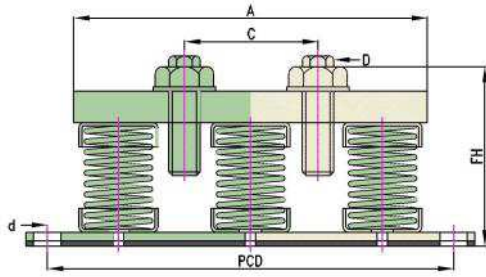
- Compliance-Springs designed according to BS 1726 (Part 1): 2002

Type	Model	Color	Capacity	Deflection	Dimension mm							
			kgf	mm	A	B	C	D	d	PCD	L	FH
SIX SPRING	SMD VI 960S	Orange	960	25	300	170	110	M12	M20	365	405	180
	SMD VI 1200S	Red	1,200	25	300	170	110	M12	M20	365	405	180
	SMD VI 1500S	Purple	1,500	25	300	170	110	M12	M20	365	405	180
	SMD VI 1800	Grey	1,800	25	300	170	110	M12	M20	365	405	180
	SMD VI 2400	Red	2,400	25	300	170	110	M12	M20	365	405	180
	SMD VI 3000	Brown	3,000	25	300	170	110	M12	M20	365	405	180
	SMD VI 3600	Black	3,600	25	300	170	110	M12	M20	365	405	180
	SMD VI 4800	Red	4,800	25	300	170	110	M12	M20	365	405	180
	SMD VI 6300	White	6,300	25	300	170	110	M12	M20	365	405	180
	SMD VI 7500	Green	7,500	25	300	170	110	M12	M20	365	405	180
	SMD VI 9000	Orange	9,000	25	300	170	110	M12	M20	365	405	180

Noted:

- Dimension is mentioned with ± 5 tolerance.
- To achieve good isolation do not overload.

OPEN SPRING MOUNT- SMD IX



Design feature:

- Laterally stable springs
- Non-Skid bolt down base.
- Plated leveling/lock bolt.

Application:

- AHU, Pump, Centrifugal and Axial Fan, Inertia Base, Internal Combustion Engines, etc.,...

Feature:

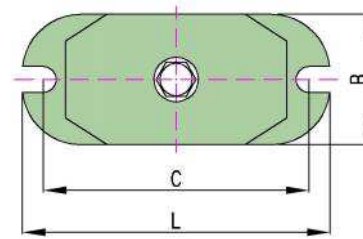
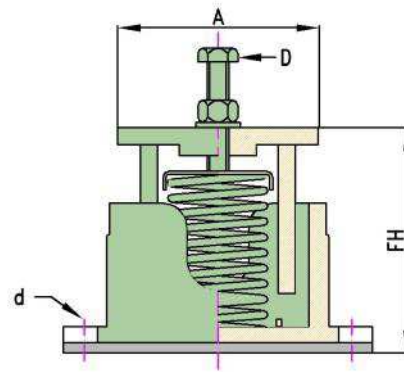
- Compliance-Springs designed according to BS 1726 (Part 1): 2002

Type	Model	Color	Capacity	Deflection	Dimension mm							
			kgf	mm	A	B	C	D	d	PCD	L	FH
NINE SPRING	SMD IX 1440S	Orange	1,440	25	300	260	110	M12	M20	365	405	180
	SMD IX 1800S	Red	1,800	25	300	260	110	M12	M20	365	405	180
	SMD IX 2700S	Purple	2,700	25	300	260	110	M12	M20	365	405	180
	SMD IX 3600	Grey	3,600	25	300	260	110	M12	M20	365	405	180
	SMD IX 4500	Red	4,500	25	300	260	110	M12	M20	365	405	180
	SMD IX 5400	Brown	5,400	25	300	260	110	M12	M20	365	405	180
	SMD IX 7200	Black	7,200	25	300	260	110	M12	M20	365	405	180
	SMD IX 9450	Red	9,450	25	300	260	110	M12	M20	365	405	180
	SMD IX 11250	White	11,250	25	300	260	110	M12	M20	365	405	180
	SMD IX 13500	Orange	13,500	25	300	260	110	M12	M20	365	405	180

Noted:

- Dimension is mentioned with ± 5 tolerance.
- To achieve good isolation do not overload.

CASED SPRING MOUNT - SMCA



Design feature:

- High efficiency vibration with spring and acoustic Friction pad.

Application:

- Chiller, Pump, Fan, Condensing Unit, Rooftop Package Unit, Compressor, Generator, etc.,...

Feature:

- Compliance-Springs designed according to BS 1726 (Part 1): 2002

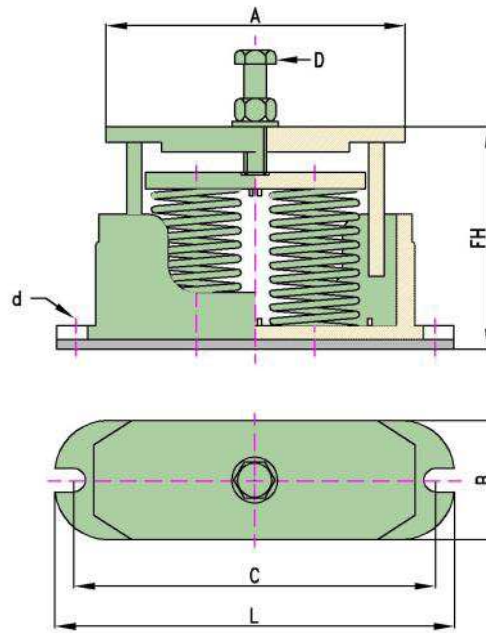
Model	Color	Capacity kgf	Deflection mm	Dimension mm						
				A	B	C	L	D	d	FH
SMCA 015	Purple	15	25	100	70	140	160	M10	M8	116
SMCA 030	Orange	30	25	100	70	140	160	M10	M8	116
SMCA 060	Blue	60	25	100	70	140	160	M10	M8	116
SMCA 100	Green	100	25	100	70	140	160	M10	M8	116
SMCA 160	Orange	160	25	100	70	140	160	M10	M8	116
SMCA 200	Red	200	25	100	70	140	160	M10	M8	116
SMCA 250	Purple	250	25	100	70	140	160	M10	M8	116
SMCA 160S	Orange	160	25	127	85	180	200	M14	M14	130
SMCA 200S	Red	200	25	127	85	180	200	M14	M14	130
SMCA 250S	Purple	250	25	127	85	180	200	M14	M14	130
SMCA 300	Grey	300	25	127	85	180	200	M14	M14	130
SMCA 400	Red	400	25	127	85	180	200	M14	M14	130
SMCA 500	Brown	500	25	127	85	180	200	M14	M14	130
SMCA 600	Black	600	25	127	85	180	200	M14	M14	130
SMCA 800	Red	800	25	127	85	180	200	M14	M14	130
SMCA 1050	White	1,050	25	127	85	180	200	M14	M14	130
SMCA 1250	Green	1,250	25	127	85	180	200	M14	M14	130
SMCA 1500	Orange	1,500	25	127	85	180	200	M14	M14	130

Noted:

- Dimension is mentioned with ± 5 tolerance.
- To achieve good isolation do not overload.

Quality MEP Product

CASED SPRING MOUNT - SMCA II



Design feature:

- High efficiency vibration with spring and acoustic Friction pad.

Application:

- Chiller, Pump, Fan, Condensing Unit, Rooftop Package Unit, Compressor, DG Set, etc.,...

Feature:

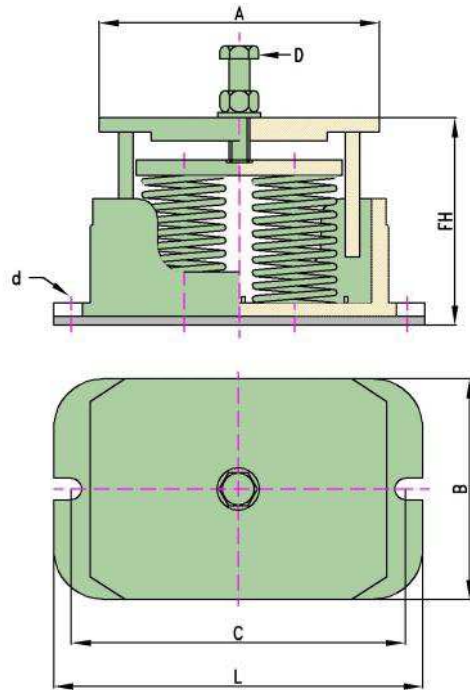
- Compliance-Springs designed according to BS 1726 (Part 1): 2002

Model	Color	Capacity kgf	Deflection mm	Dimension mm						
				A	B	C	L	D	d	FH
SMCA II 320S	Orange	320	25	210	85	265	285	M16	M14	150
SMCA II 400S	Red	400	25	210	85	265	285	M16	M14	150
SMCA II 500S	Purple	500	25	210	85	265	285	M16	M14	150
SMCA II 600	Grey	600	25	210	85	265	285	M16	M14	150
SMCA II 800	Red	800	25	210	85	265	285	M16	M14	150
SMCA II 1000	Brown	1,000	25	210	85	265	285	M16	M14	150
SMCA II 1200	Black	1,200	25	210	85	265	285	M16	M14	150
SMCA II 1600	Red	1,600	25	210	85	265	285	M16	M14	150
SMCA II 2100	White	2,100	25	210	85	265	285	M16	M14	150
SMCA II 2500	Green	2,500	25	210	85	265	285	M16	M14	150
SMCA II 3000	Orange	3,000	25	210	85	265	285	M16	M14	150

Noted:

- Dimension is mentioned with ± 5 tolerance.
- To achieve good isolation do not overload.

CASED SPRING MOUNT - SMCA IV



Design feature:

- High efficiency vibration with spring and acoustic Friction pad.

Application:

- Chiller, Pump, Fan, Condensing Unit, Rooftop Package Unit, Compressor, DG Set, etc.,...

Feature:

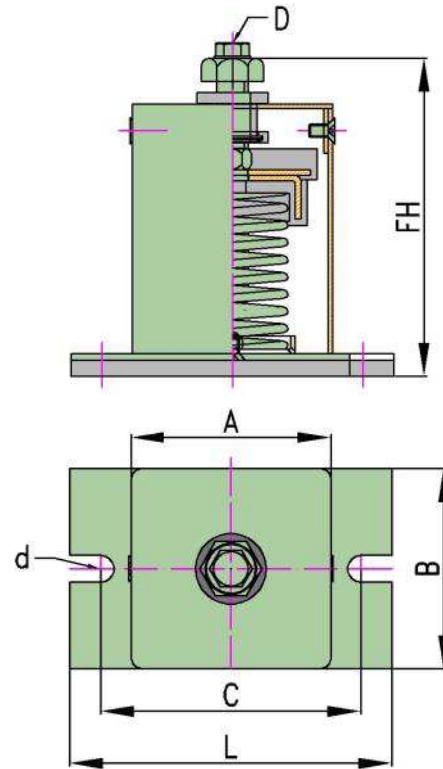
- Compliance-Springs designed according to BS 1726 (Part 1): 2002

Model	Color	Capacity kgf	Deflection mm	Dimension mm						
				A	B	C	L	D	d	FH
SMCA IV 640S	Orange	640	25	225	170	300	320	M20	M16	160
SMCA IV 800S	Red	800	25	225	170	300	320	M20	M16	160
SMCA IV 1000S	Purple	1,000	25	225	170	300	320	M20	M16	160
SMCA IV 1200	Grey	1,200	25	225	170	300	320	M20	M16	160
SMCA IV 1600	Red	1,600	25	225	170	300	320	M20	M16	160
SMCA IV 2000	Brown	2,000	25	225	170	300	320	M20	M16	160
SMCA IV 2400	Black	2,400	25	225	170	300	320	M20	M16	160
SMCA IV 3200	Red	3,200	25	225	170	300	320	M20	M16	160
SMCA IV 4200	White	4,200	25	225	170	300	320	M20	M16	160
SMCA IV 5000	Green	5,000	25	225	170	300	320	M20	M16	160
SMCA IV 6000	Orange	6,000	25	225	170	300	320	M20	M16	160

Noted:

- Dimension is mentioned with ± 5 tolerance.
- To achieve good isolation do not overload.

RESTRAINED SPRING MOUNT - SME



Design feature:

- Laterally stable springs
- Non-Skid bolt down base.
- Plated leveling/lock bolt.

Application:

- AHU, Pump, Centrifugal and Axial Fan, Inertia Base, Internal Combustion Engines, etc.,...

Feature:

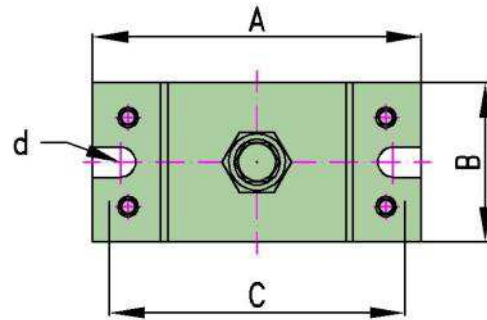
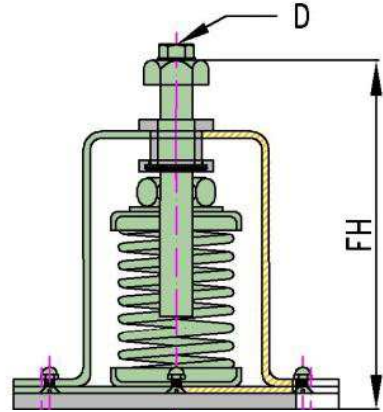
- Compliance-Springs designed according to BS 1726 (Part 1): 2002

Model	Color	Capacity kgf	Deflection mm	Dimension mm						
				A	B	C	D	d	L	FH
SME 015	Purple	15	25	90	90	118	M14	M10	145	132
SME 030	Yellow	30	25	90	90	118	M14	M10	145	132
SME 060	Blue	60	25	90	90	118	M14	M10	145	132
SME 100	Green	100	25	90	90	118	M14	M10	145	132
SME 160	Orange	160	25	90	90	118	M14	M10	145	132
SME 200	Red	200	25	90	90	118	M14	M10	145	132
SME 250	Purple	250	25	90	90	118	M14	M10	145	132
SME 160S	Orange	160	25	125	125	156	M16	M12	185	172
SME 200S	Red	200	25	125	125	156	M16	M12	185	172
SME 250S	Purple	250	25	125	125	156	M16	M12	185	172
SME 300	Grey	300	25	125	125	156	M16	M12	185	172
SME 400	Red	400	25	125	125	156	M16	M12	185	172
SME 500	Brown	500	25	125	125	156	M16	M12	185	172
SME 600	Black	600	25	125	125	156	M16	m12	185	172
SME 800	Red	800	25	125	125	156	M16	m12	185	172
SME 1050	White	1,050	25	125	125	156	M16	m12	185	172
SME 1250	Green	1,250	25	125	125	156	M16	m12	185	175
SME 1500	Orange	1,500	25	125	125	156	M16	m12	185	175

Noted:

- Dimension is mentioned with ± 5 tolerance.
- To achieve good isolation do not overload.

RESTRAINED SPRING MOUNT - SMF



Design feature:

- Laterally stable springs
- Non-Skid bolt down base.
- Plated leveling/lock bolt.

Application:

- AHU, Pump, Centrifugal and Axial Fan, Inertia Base, Internal Combustion Engines, etc.,...

Feature:

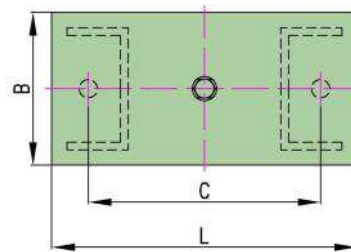
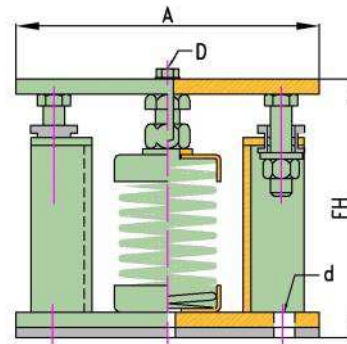
- Compliance-Springs designed according to BS 1726 (Part 1): 2002

Model	Color	Capacity	Deflection	Dimension mm					
		kgf	mm	A	B	C	D	d	FH
SMF 015	Purple	15	25	140	70	112	M8	M10	100
SMF 030	Yellow	30	25	140	70	112	M8	M10	100
SMF 060	Blue	60	25	140	70	112	M8	M10	100
SMF 100	Green	100	25	140	70	112	M8	M10	100
SMF 160	Orange	160	25	140	70	112	M8	M10	100
SMF 200	Red	200	25	140	70	112	M8	M10	100
SMF 250	Purple	250	25	140	70	112	M8	M10	100
SMF 160S	Orange	160	25	164	85	138	M10	M12	165
SMF 200S	Red	200	25	164	85	138	M10	M12	165
SMF 250S	Purple	250	25	164	85	138	M10	M12	165
SMF 300	Grey	300	25	164	85	138	M10	M12	165
SMF 400	Red	400	25	164	85	138	M10	M12	165
SMF 500	Brown	500	25	164	85	138	M10	M12	165
SMF 600	Black	600	25	164	85	138	M10	M12	165
SMF 800	Red	800	25	164	85	138	M10	M12	165
SMF 1050	White	1,050	25	164	85	138	M10	M12	165
SMF 1250	Green	1,250	25	164	85	138	M10	M12	165
SMF 1500	Orange	1,500	25	140	85	138	M10	M12	165

Noted:

- Dimension is mentioned with ± 5 tolerance.
- To achieve good isolation do not overload.

RESTRAINED SPRING MOUNT- RSI



Design feature:

- Free-standing mount.
- Limited vertical movement.

Application:

- Chiller, Generator, Cooling Tower, etc.,...

Feature:

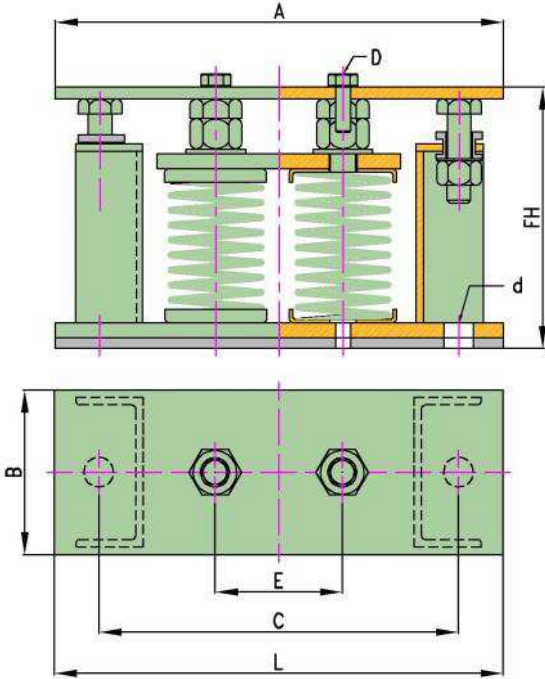
- Compliance-Springs designed according to BS 1726 (Part 1): 2002

Model	Color	Capacity	Deflection	Dimension mm						
		kgf	mm	A	B	C	L	D	d	FH
RSI 160S	Orange	160	25	127	85	180	200	M8	M10	160
RSI 200S	Red	200	25	127	85	180	200	M8	M10	160
RSI 250S	Purple	250	25	127	85	180	200	M8	M10	160
RSI 300	Grey	300	25	127	85	180	200	M8	M10	160
RSI 400	Red	400	25	127	85	180	200	M8	M10	160
RSI 500	Brown	500	25	127	85	180	200	M8	M10	160
RSI 600	Black	600	25	127	85	180	200	M8	M10	160
RSI 800	Red	800	25	127	85	180	200	M8	M10	160
RSI 1050	White	1,050	25	127	85	180	200	M8	M10	160
RSI 1250	Green	1,250	25	127	85	180	200	M8	M10	160
RSI 1500	Orange	1,500	25	127	85	180	200	M8	M10	160

Noted:

- Dimension is mentioned with ± 5 tolerance.
- To achieve good isolation do not overload.

RESTRAINED SPRING MOUNT- RSI II



Design feature:

- Free-standing mount.
- Limited vertical movement.

Application:

- Chiller, Generator, Cooling Tower, etc.,...

Feature:

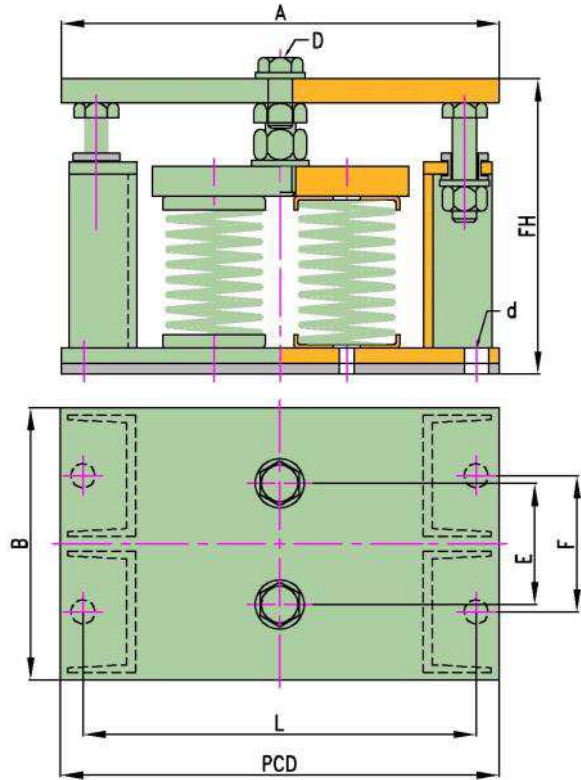
- Compliance-Springs designed according to BS 1726 (Part 1): 2002

Model	Color	Capacity	Deflection	Dimension mm							
		kgf	mm	A	B	C	L	D	d	FH	E
RSI II 320S	Orange	320	25	300	110	244	300	M10	M16	165	85
RSI II 400S	Red	400	25	300	110	244	300	M10	M16	165	85
RSI II 500S	Purple	500	25	300	110	244	300	M10	M16	165	85
RSI II 600	Grey	600	25	300	110	244	300	M10	M16	165	85
RSI II 800	Red	800	25	300	110	244	300	M10	M16	165	85
RSI II 1000	Brown	1,000	25	300	110	244	300	M10	M16	165	85
RSI II 1200	Black	1,200	25	300	110	244	300	M10	M16	165	85
RSI II 1600	Red	1,600	25	300	110	244	300	M10	M16	165	85
RSI II 2100	White	2,100	25	300	110	244	300	M10	M16	165	85
RSI II 2500	Green	2,500	25	300	110	244	300	M10	M16	165	85
RSI II 3000	Orange	3,000	25	300	110	244	300	M10	M16	165	85

Noted:

- Dimension is mentioned with ± 5 tolerance.
- To achieve good isolation do not overload.

RESTRAINED SPRING MOUNT- RSI IV



Design feature:

- Free-standing mount.
- Limited vertical movement.

Application:

- Chiller, Generator, Cooling Tower, etc.,...

Feature:

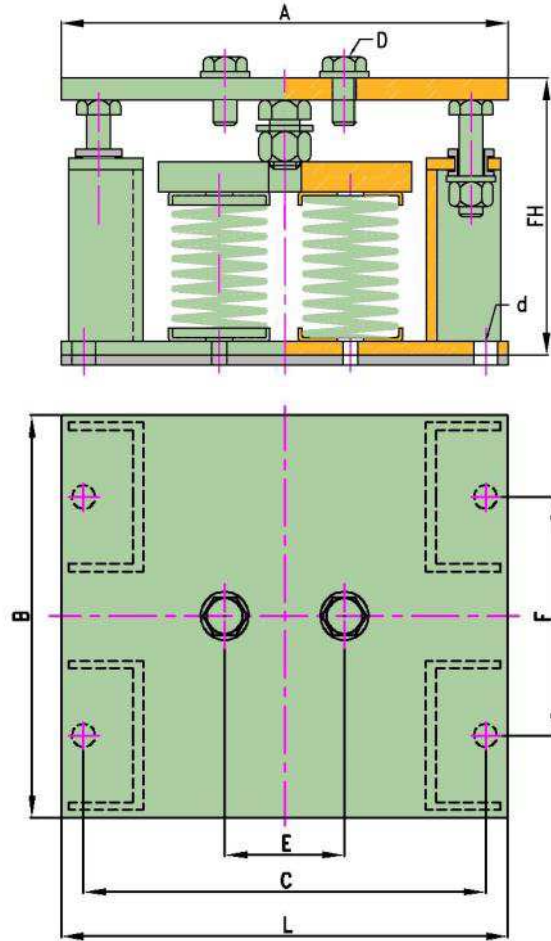
- Compliance-Springs designed according to BS 1726 (Part 1): 2002

Model	Color	Capacity	Deflection	Dimension mm								
		kgf	mm	A	B	L	PCD	D	d	FH	E	F
RSI IV 640S	Orange	640	25	290	180	260	290	M16	M14	185	80	90
RSI IV 800S	Red	800	25	290	180	260	290	M16	M14	185	80	90
RSI IV 1000S	Purple	1,000	25	290	180	260	290	M16	M14	185	80	90
RSI IV 1200	Grey	1,200	25	290	180	260	290	M16	M14	185	80	90
RSI IV 1600	Red	1,600	25	290	180	260	290	M16	M14	185	80	90
RSI IV 2000	Brown	2,000	25	290	180	260	290	M16	M14	185	80	90
RSI IV 2400	Black	2,400	25	290	180	260	290	M16	M14	185	80	90
RSI IV 3200	Red	3,200	25	290	180	260	290	M16	M14	185	80	90
RSI IV 4200	White	4,200	25	290	180	260	290	M16	M14	185	80	90
RSI IV 5000	Green	5,000	25	290	180	260	290	M16	M14	185	80	90
RSI IV 6000	Orange	6,000	25	290	180	260	290	M16	M14	185	80	90

Noted:

- Dimension is mentioned with ± 5 tolerance.
- To achieve good isolation do not overload.

RESTRAINED SPRING MOUNT- RSI IV



Design feature:

- Free-standing mount.
- Limited vertical movement.

Application:

- Chiller, Generator, Cooling Tower, etc.,...

Feature:

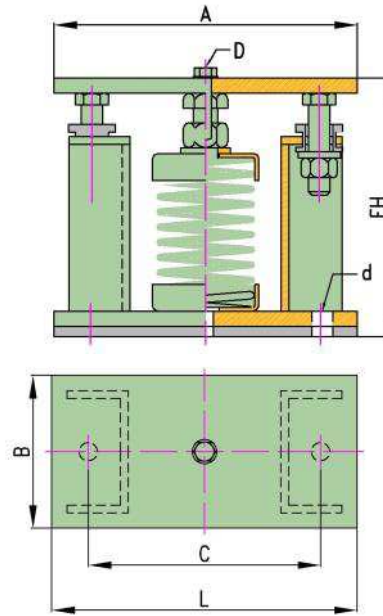
- Compliance-Springs designed according to BS 1726 (Part 1): 2002

Model	Color	Capacity kgf	Deflection mm	Dimension mm								
				A	B	C	L	D	d	FH	E	F
RSI VI 960S	Orange	960	25	300	270	270	300	M16	M14	190	80	160
RSI VI 1200S	Red	1,200	25	300	270	270	300	M16	M14	190	80	160
RSI VI 1500S	Purple	1,500	25	300	270	270	300	M16	M14	190	80	160
RSI VI 1800	Grey	1,800	25	300	270	270	300	M16	M14	190	80	160
RSI VI 2400	Red	2,400	25	300	270	270	300	M16	M14	190	80	160
RSI VI 3000	Brown	3,000	25	300	270	270	300	M16	M14	190	80	160
RSI VI 3600	Black	3,600	25	300	270	270	300	M16	M14	190	80	160
RSI VI 4800	Red	4,800	25	300	270	270	300	M16	M14	190	80	160
RSI VI 6300	White	6,300	25	300	270	270	300	M16	M14	190	80	160
RSI VI 7500	Green	7,500	25	300	270	270	300	M16	M14	190	80	160
RSI VI 9000	Orange	9,000	25	300	270	270	300	M16	M14	190	80	160

Noted:

- Dimension is mentioned with ± 5 tolerance.
- To achieve good isolation do not overload.

RESTRAINED SPRING MOUNT- RSI-2 (50 mm deflection)



Design feature:

- Free-standing mount.
- Limited vertical movement.

Application:

- Chiller, Generator, Cooling Tower, etc.,...

Feature:

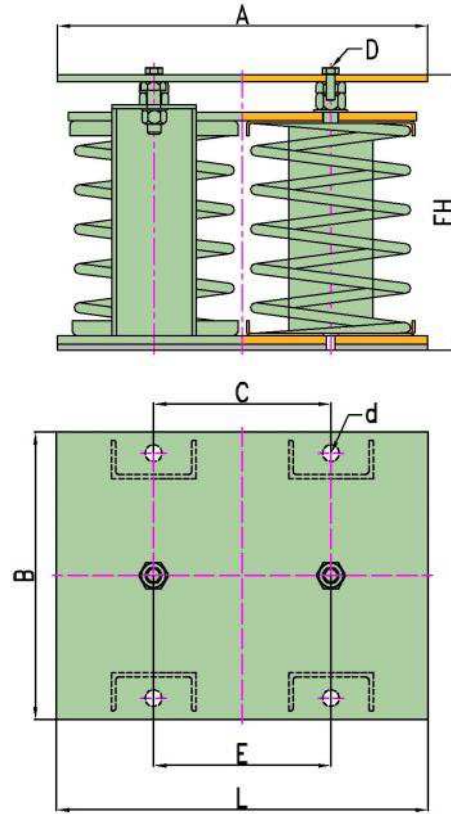
- Compliance-Springs designed according to
- BS 1726 (Part 1): 2002

Model	Color	Capacity	Deflection	Dimension mm						
		kgf	mm	A	B	C	L	D	d	FH
RSI-2-100	Green	100	50	250	125	200	250	M8	M10	215
RSI-2-150	Orange	150	50							
RSI-2-200	Red	200	50							
RSI-2-250	Purple	250	50							
RSI-2-300	Grey	300	50							
RSI-2-400	Red	400	50							
RSI-2-500	Brown	500	50	280	150	230	280	M8	M10	260
RSI-2-600	Black	600	50							
RSI-2-800	Red	800	50							
RSI-2-1000	White	1,000	50	360	200	280	360	M10	M16	320
RSI-2-1300	Green	1,300	50							
RSI-2-1800	Orange	1,800	50							
RSI-2-2400	Black	2,400	50	400	230	320	400	M12	M16	340
RSI-2-3200	Red	3,200	50							
RSI-2-4000	White	4,000	50							

Noted:

- Dimension is mentioned with ± 5 tolerance.
- To achieve good isolation do not overload.

RESTRAINED SPRING MOUNT- RSI-2-II (50 mm deflection)



Design feature:

- Free-standing mount.
- Limited vertical movement.

Application:

- Chiller, Generator, Cooling Tower, etc.,...

Feature:

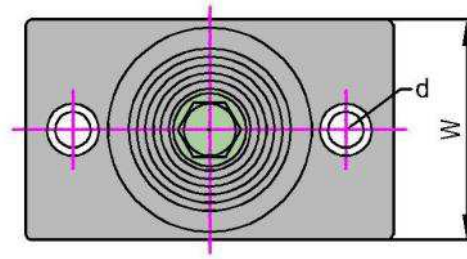
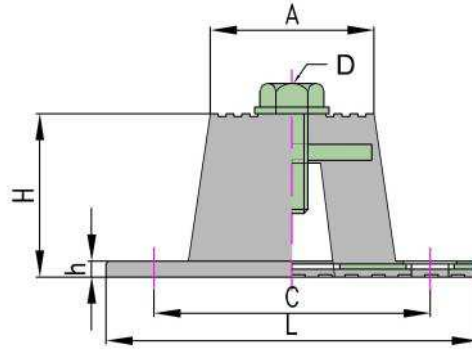
- Compliance-Springs designed according to
- BS 1726 (Part 1): 2002

Model	Color	Capacity kgf	Deflection mm	Dimension mm							
				A	B	C	L	D	d	FH	E
RSI-2-II-2600	Green	2,600	50	360	320	170	360	M16	M16	320	160
RSI-2-II-3600	Orange	3,600	50								
RSI-2-II-2600	Green	2,600	50	450	350	210	450	M16	M16	340	210
RSI-2-II-3600	Orange	3,600	50								
RSI-2-II-4000	Black	4,000	50								
RSI-2-II-4200	Black	4,200	50								
RSI-2-II-6000	Red	6,000	50								
RSI-2-II-6400	Red	6,400	50								
RSI-2-II-7600	White	7,600	50								
RSI-2-II-8000	White	8,000	50								

Noted:

- Dimension is mentioned with ± 5 tolerance.
- To achieve good isolation do not overload.

RUBBER MOUNT-RMA



Design feature:

- Use neoprene element.
- Saving space installation.

Application:

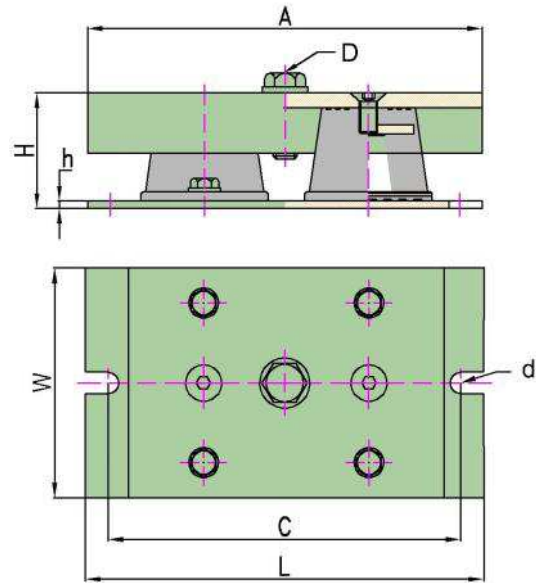
- Riser Pipe, AHU, Outdoor VRV Unit,
- Fan, Pump, Generator, etc.,...

Model	Color Code	Capacity	Deflection	Dimension mm							
		kgf	mm	A	W	L	C	H	h	D	d
RMA 25	Black	25	3	40	58	98	78	53	6	M10	M8
RMA 50	Red	50	5								
RMA 100	Grey	100	5								
RMA 150	White	150	7								
RMA 200	Blue	200	7								
RMA 250	Yellow	250	9								
RMA 300	Black	300	7	62	84	140	104	62	6	M12	M12
RMA 400	White	400	9								
RMA 500	Grey	500	12								
RMA 600	Orange	600	7								
RMA 800	Yellow	800	10								
RMA 1000	Black	1,000	10								

Noted:

- Dimension is mentioned with ± 5 tolerance.
- To achieve good isolation do not overload.

RUBBER MOUNT-RMA-II



Design feature:

- Use neoprene element.
- Saving space installation.

Application:

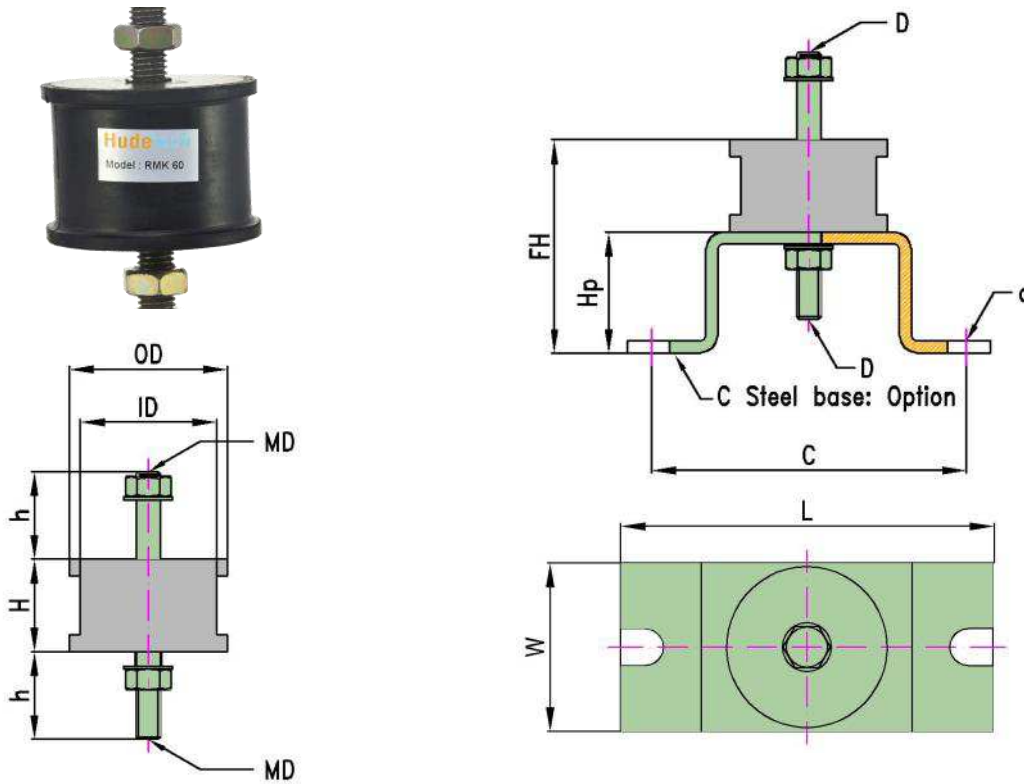
- Riser Pipe, AHU, Outdoor VRV Unit,
- Fan, Pump, Generator, etc.,...

Model	Color Code	Capacity	Deflection	Dimension mm							
		kgf	mm	A	W	L	C	H	h	D	d
RMA-II-600	Black	600	7	260	150	260	230	76	5	M16	M12
RMA-II-800	White	800	9								
RMA-II-1000	Grey	1,000	12								
RMA-II-1200	Orange	1,200	7								
RMA-II-1600	Yellow	1,600	10								
RMA-II-2000	Black	2,000	10								

Noted:

- Dimension is mentioned with ± 5 tolerance.
- To achieve good isolation do not overload.

RUBBER MOUNT-RMK



Design feature:

- Use neoprene element.
- Saving space installation.
- Optional: C steel base.

Application:

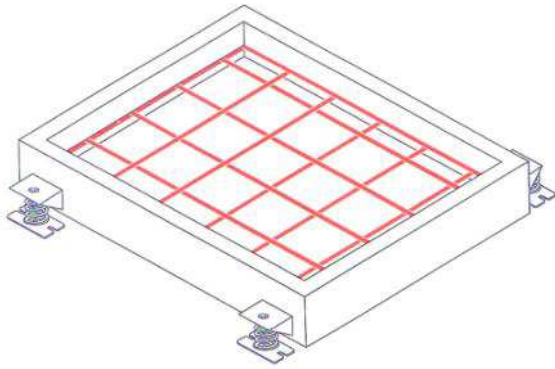
- Riser Pipe, AHU, Outdoor VRV Unit,
- Fan, Pump, Generator, etc.,...

Model	Capacity	Deflection	Dimension mm										
	kgf	mm	OD	ID	H	h	Hp	FH	Md	d	L	W	C
RMK 40	50-70	5	40	40	31	25	50	81	M8	M10	114	50	95
RMK 60	50-100	5	60	56	38	35	50	88	M8	M10	140	80	115
RMK 65	80-180	5	65	60	47	35	50	97	M8	M10	140	80	115
RMK 80	160-300	5	80	70	47	35	50	97	M10	M12	154	90	136
RMK 100	280-500	5	100	95	56	35	50	106	M12	M12	170	120	154
RMK 120	480-800	5	120	108	64	35	50	114	M14	M12	190	140	174

Noted:

- Dimension is mentioned with ± 5 tolerance.
- To achieve good isolation do not overload.

INERTIA BASE



Design feature:

- Construction included frame steel and concrete plinth.
- Mounting selection base on 4 or 6 mount points.

Application:

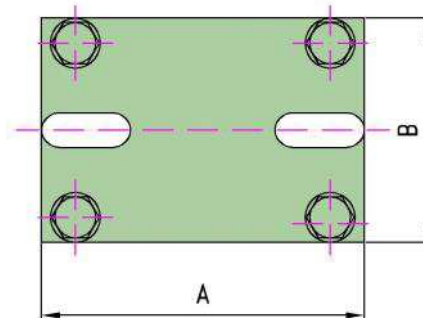
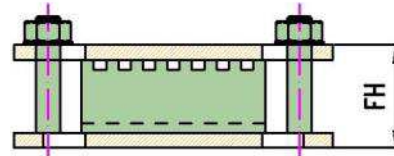
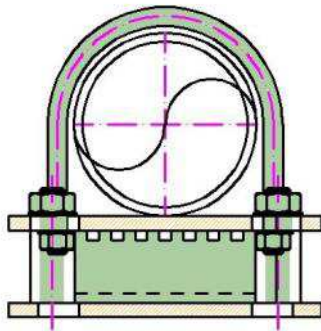
- Pump, Generator, large centrifugal fan, industrial washing machine, rotating mechanical equipment, etc.,...

Model	Thickness	Dimension mm			
	mm	Wide	Length	Height	Mount Point
IB 150	150	Customizer	Customizer	150	4/6
IB 200	200	Customizer	Customizer	200	4/6
IB 300	300	Customizer	Customizer	300	4/6
IB 400	400	Customizer	Customizer	400	4/6
IB 500	500	Customizer	Customizer	500	4/6

Noted:

- Dimension is mentioned with ± 5 tolerance.
- To achieve good isolation do not overload.

PIPE RUBBER MOUNT - PRM



Design feature:

- Vibration Spring Pad with steel plate.
- Easy install with U bolt slot hole.

Application:

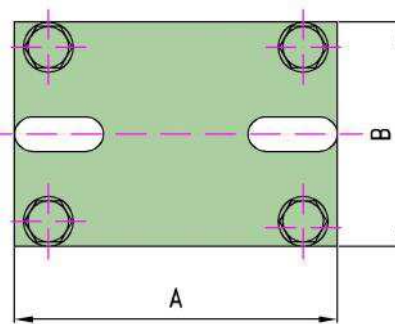
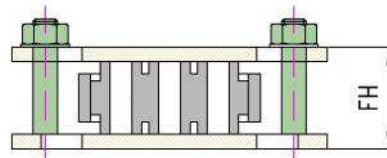
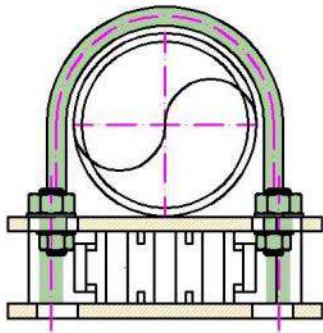
- Horizontal pipe.

Pipe Size	Model	Capacity kgf	Dimension mm			
			A	B	FH	U Bolt Size
∅50	PRM 100	250	135	100	51	M8/M10
∅65	PRM 100					
∅80	PRM 200	550	190	100	51	M8/M10
∅100	PRM 200					
∅125	PRM 200					
∅150	PRM 400	1,200	270	100	51	M10/M12
∅200	PRM 400					
∅250	PRM 1000	2,100	380	150	51	M10/M12
∅300	PRM 1000					
∅350	PRM 1500	2,300	470	200	51	M12/M16
∅400	PRM 1500					
∅450	PRM 2000	2,500	580	200	51	M12/M16
∅500	PRM 2000					
∅550	PRM 2500	2,700	690	200	54	M12/M16
∅600	PRM 2500					

Noted:

- Dimension is mentioned with ± 5 tolerance.
- To achieve good isolation do not overload.

PIPE SPRING RUBBER MOUNT - PSRM



Design feature:

- Vibration Spring Pad with steel plate.
- Easy install with U bolt slot hole.

Application:

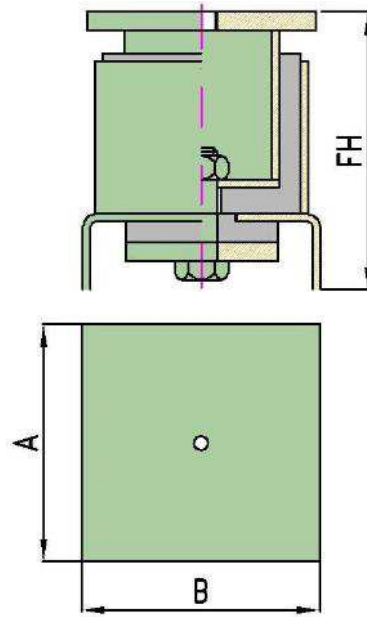
- Horizontal pipe.

Pipe Size	Model	Capacity kgf	Dimension mm			
			A	B	FH	U Bolt Size
∅50	PSRM 100	100	135	100	48	M8/M10
∅65	PSRM 100					
∅80	PSRM 200	200	190	100	51	M8/M10
∅100	PSRM 200					
∅125	PSRM 200					
∅150	PSRM 400	400	270	100	51	M10/M12
∅200	PSRM 400					
∅250	PSRM 1000	1,000	380	150	51	M10/M12
∅300	PSRM 1000					
∅350	PSRM 1500	1,500	470	200	51	M12/M16
∅400	PSRM 1500					
∅450	PSRM 2000	2,000	580	200	51	M12/M16
∅500	PSRM 2000					
∅550	PSRM 2500	2,500	690	200	54	M12/M16
∅600	PSRM 2500					

Noted:

- Dimension is mentioned with ±5 tolerance.
- To achieve good isolation do not overload.

PIPE ANCHOR GUIDE- PAG



Design feature:

- Vibration Pad with steel plate.
- Easy install with pipe clamp.

Application:

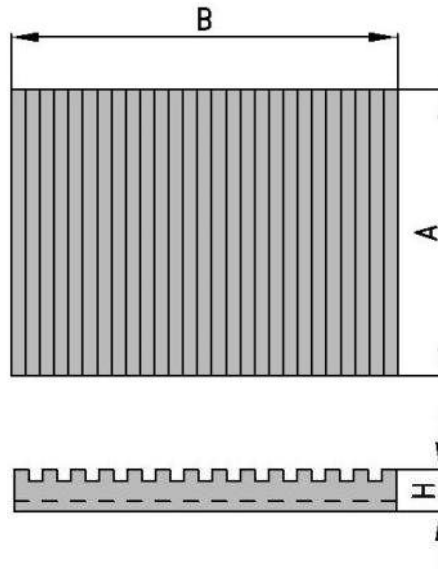
- Riser, Vertical Pipe
- Horizontal pipe.

Pipe Size (DN)	Model	Capacity	Deflection	Dimension mm			Set Bolt
		kgf	mm	A	B	H	
25	PAG 75	250	3	75	75	114	M10
32							
40							
50							
65	PAG 200	1,500	5	100	100	145	M16
80							
100							
125							
150	PAG 350	6,000	6.5	150	150	178	M20
200							
250							
300							
350	PAG 600	14,000	7	230	230	280	M24
400							
450							
500							
600	PAG 800	22,000	7	300	300	345	M30
650							
700							
750							

Noted:

- Dimension is mentioned with ± 5 tolerance.
- To achieve good isolation do not overload.

RUBBER PAD - RPA



Design feature:

- Alternate high/low ribbed construction
- Easy to cut pad.
- Optional:
 - + Oil resistance: ASTM D 471-06.
 - + Fire rate.
 - + ASTM F 1861.

Application:

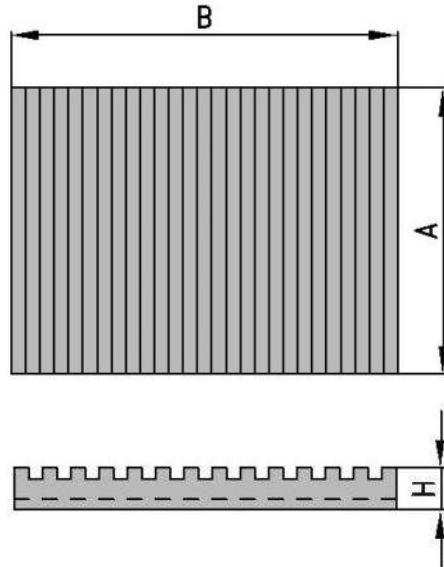
- AHU, chiller, Cooling Tower, Generator, Compressor, etc...
- Compressor, etc...

Model	Color code	Capacity	Deflection	Dimension mm		
		Kg/cm ²	mm	A	B	H
RPA 100X100X10	Black	3.75	3	100	100	10
RPA 200X200X10	Black	3.75	3	200	200	10
RPA 300X300X10	Black	3.75	3	300	300	10
RPA 400X400X10	Black	3.75	3	400	400	10
RPA 500X500X10	Black	3.75	3	500	500	10
RPA 600X600X10	black	3.75	3	600	600	10
RPA 100X100X15	Black	4.60	6	100	100	15
RPA 200X200X15	Black	4.60	6	200	200	15
RPA 300X300X15	Black	4.60	6	300	300	15
RPA 400X400X15	Black	4.60	6	400	400	15
RPA 500X500X15	Black	4.60	6	500	500	15
RPA 600X600X15	black	4.50	6	600	600	15
RPA 100X100X20	Black	21.30	6	100	100	20
RPA 200X200X20	Black	21.30	6	200	200	20
RPA 300X300X20	Black	21.30	6	300	300	20
RPA 400X400X20	Black	21.30	6	400	400	20
RPA 500X500X20	Black	21.30	6	500	500	20
RPA 600X600X20	black	21.30	6	600	600	20

Noted:

- Dimension is mentioned with ±5 tolerance.
- To achieve good isolation do not overload.

RUBBER PAD - RPA



Design feature:

- Alternate high/low ribbed construction
- Easy to cut pad.
- Optional:
 - + Oil resistance: ASTM D 471-06.
 - + Fire rate.
 - + ASTM F 1861.

Application:

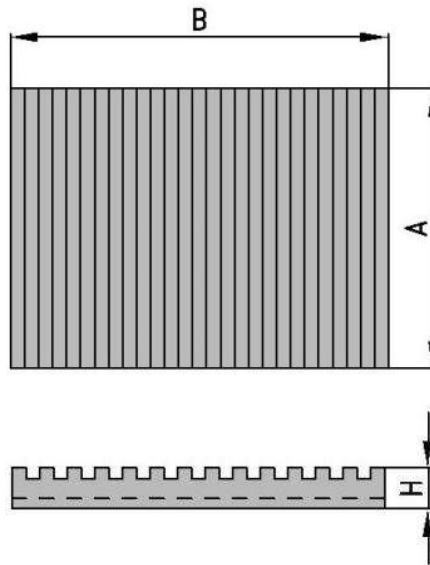
- AHU, chiller, Cooling Tower, Generator, Compressor, etc...
- Compressor, etc...

Model	Color code	Capacity	Deflection	Dimension mm		
		Kg/cm ²	mm	A	B	H
RPA 100X100X30	Black	12.20	6	100	100	30
RPA 200X200X30	Black	12.20	6	200	200	30
RPA 300X300X30	Black	12.20	6	300	300	30
RPA 400X400X30	Black	12.20	6	400	400	30
RPA 500X500X30	Black	12.20	6	500	500	30
RPA 600X600X30	black	12.20	6	600	600	30
RPA 100X100X40	Black	12.83	10	100	100	40
RPA 200X200X40	Black	12.83	10	200	200	40
RPA 300X300X40	Black	12.83	10	300	300	40
RPA 400X400X40	Black	12.83	10	400	400	40
RPA 500X500X40	Black	3.75	10	500	500	40
RPA 600X600X40	black	12.83	10	600	600	40
RPA 100X100X50	Black	15.52	10	100	100	50
RPA 200X200X50	Black	15.52	10	200	200	50
RPA 300X300X50	Black	15.52	10	300	300	50
RPA 400X400X50	Black	15.52	10	400	400	50
RPA 500X500X50	Black	15.52	10	500	500	50
RPA 600X600X50	black	15.52	10	600	600	50

Noted:

- Dimension is mentioned with ±5 tolerance.
- To achieve good isolation do not overload.

RUBBER PAD - RPA



Design feature:

- Alternate high/low ribbed construction
- Easy to cut pad.
- Optional:
 - + Oil resistance: ASTM D 471-06.
 - + Fire rate.
 - + ASTM F 1861.

Application:

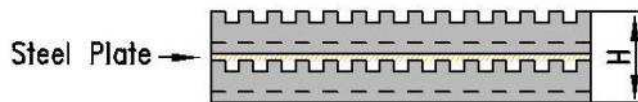
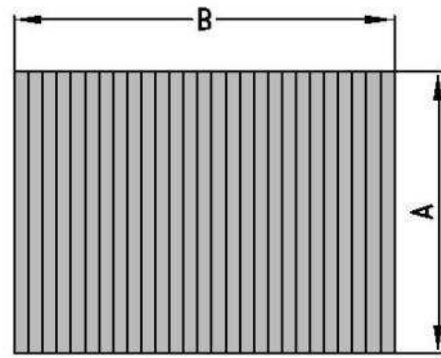
- AHU, chiller, Cooling Tower, Generator, Compressor, etc...
- Compressor, etc...

Model	Color code	Capacity	Deflection	Dimension mm		
		Kg/cm ²	mm	A	B	H
RPA 100X100X60	Black	20.72	10	100	100	60
RPA 200X200X60	Black	20.73	10	200	200	60
RPA 300X300X60	Black	20.72	10	300	300	60
RPA 400X400X60	Black	20.72	10	400	400	60
RPA 500X500X60	Black	20.72	10	500	500	60
RPA 600X600X60	black	20.72	10	600	600	60

Noted:

- Dimension is mentioned with ±5 tolerance.
- To achieve good isolation do not overload.

RUBBER PAD - RPB



Design feature:

- Alternate high/low ribbed construction
- Constructed of a steel plate bonded between Ribbed Anti Vibration Pad.
- Optional:
 - + Oil resistance: ASTM D 471-06.
 - + Fire rate.
 - + ASTM F 1861.

Application:

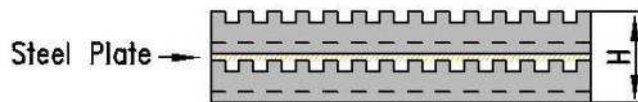
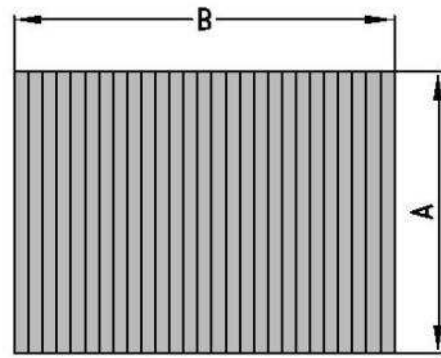
- AHU, chiller, Cooling Tower, Generator, Compressor, etc...

Model	Capacity	Deflection	Dimension mm		
	Kg/cm ²	mm	A	B	H
RPB 100X100X20	3.75	6	100	100	20
RPB 200X200X20	3.75	6	200	200	20
RPB 300X300X20	3.75	6	300	300	20
RPB 400X400X20	3.75	6	400	400	20
RPB 500X500X20	3.75	6	500	500	20
RPB 600X600X20	3.75	6	600	600	20
RPB 100X100X30	4.60	12	100	100	40
RPB 200X200X30	4.60	12	200	200	40
RPB 300X300X30	4.60	12	300	300	40
RPB 400X400X30	4.06	12	400	400	40
RPB 500X500X30	4.60	12	500	500	40
RPB 600X600X30	4.60	12	600	600	40
RPB 100X100X40	21.30	12	100	100	40
RPB 200X200X40	21.30	12	200	200	40
RPB 300X300X40	21.30	12	300	300	40
RPB 400X400X40	21.30	12	400	400	40
RPB 500X500X40	21.30	12	500	500	40
RPB 600X600X40	21.30	12	600	600	40

Noted:

- Dimension is mentioned with ±5 tolerance.
- To achieve good isolation do not overload.

RUBBER PAD - RPB



Design feature:

- Alternate high/low ribbed construction
- Constructed of a steel plate bonded between Ribbed Anti Vibration Pad.
- Optional:
 - + Oil resistance: ASTM D 471-06.
 - + Fire rate.
 - + ASTM F 1861.

Application:

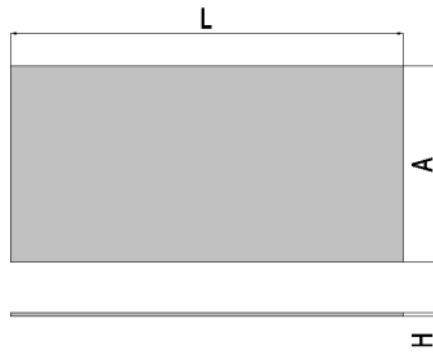
- AHU, chiller, Cooling Tower, Generator, Compressor, etc...

Model	Capacity	Deflection	Dimension mm		
	Kg/cm ²		mm	A	B
RPB 100X100X40	21.30	12	100	100	40
RPB 200X200X40	21.30	12	200	200	40
RPB 300X300X40	21.30	12	300	300	40
RPB 400X400X40	21.30	12	400	400	40
RPB 500X500X40	21.30	12	500	500	40
RPB 600X600X40	21.30	12	600	600	40
RPB 100X100X60	12.2	12	100	100	60
RPB 200X200X60	12.2	12	200	200	60
RPB 300X300X60	12.2	12	300	300	60
RPB 400X400X60	12.2	12	400	400	60
RPB 500X500X60	12.2	12	500	500	60
RPB 600X600X60	12.2	12	600	600	60

Noted:

- Dimension is mentioned with ±5 tolerance.
- To achieve good isolation do not overload.

RUBBER PAD - RPC



Design feature:

- Alternate high/low ribbed construction
- Easy to cut pad.
- Optional:
 - + Oil resistance.
 - + Fire rate.
 - + ASTM F 1861.

Application:

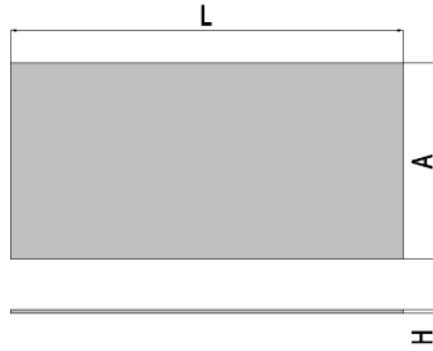
- AHU, chiller, Cooling Tower, Generator, Compressor, etc...

Model	Capacity	Deflection	Dimension mm		
	Kg/cm ²	mm	A	H	L
RPC 500XLX3	≥10.0	1.5	500	5	100-10,000
RPC 1000XLX3	≥10.0	1.5	1000	5	100-10,000
RPC 100XLX5	≥12.5	2	100	5	100-10,000
RPC 200XLX5	≥12.5	2	200	5	100-10,000
RPC 300XLX5	≥12.5	2	300	5	100-10,000
RPC 400XLX5	≥12.5	2	400	5	100-10,000
RPC 500XLX5	≥12.5	2	500	5	100-10,000
RPC 1000XLX5	≥12.5	2	1000	5	100-10,000
RPC 100XLX10	≥35.0	3	100	10	100-10,000
RPC 200XLX10	≥35.0	3	200	10	100-10,000
RPC 300XLX10	≥35.0	3	300	10	100-10,000
RPC 400XLX10	≥35.0	3	400	10	100-10,000
RPC 500XLX10	≥35.0	3	500	10	100-10,000
RPC 1000XLX10	≥35.0	3	1000	10	100-10,000
RPC 300XLX15	≥35.0	4	300	25	300-1,200
RPC 500XLX15	≥35.0	4	500	25	300-1,200
RPC 600XLX15	≥35.0	4	600	25	300-1,200
RPC 800XLX15	≥35.0	4	800	25	300-1,200

Noted:

- Dimension is mentioned with ±5 tolerance.
- To achieve good isolation do not overload.

RUBBER PAD - RPC



Design feature:

- Alternate high/low ribbed construction
- Easy to cut pad.
- Optional:
 - + Oil resistance.
 - + Fire rate.
 - + ASTM F 1861.

Application:

- AHU, chiller, Cooling Tower, Generator, Compressor, etc...

Model	Capacity	Deflection	Dimension mm		
	Kg/cm ²	mm	A	H	L
RPC 500XLX3	≥10.0	1.5	500	5	100-10,000
RPC 300XLX25	≥85.0	10	300	25	300-1,200
RPC 500XLX25	≥85.0	10	500	25	300-1,200
RPC 600XLX25	≥85.0	10	600	25	300-1,200
RPC 800XLX25	≥85.0	10	800	25	300-1,200
RPC 1000XLX25	≥85.0	10	1,000	25	100-10,000
RPC 1000XLX30	≥85.0	10	1,000	50	100-1,000
RPC 1000XLX40	≥35.0	12	1,000	50	100-1,000
RPC 1000XLX50	≥35.0	12	1,000	50	100-1,000

Noted:

- Dimension is mentioned with ±5 tolerance.
- To achieve good isolation do not overload.

